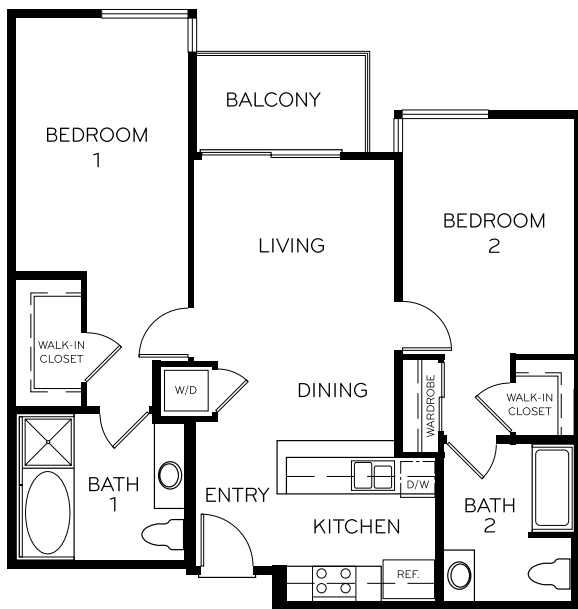
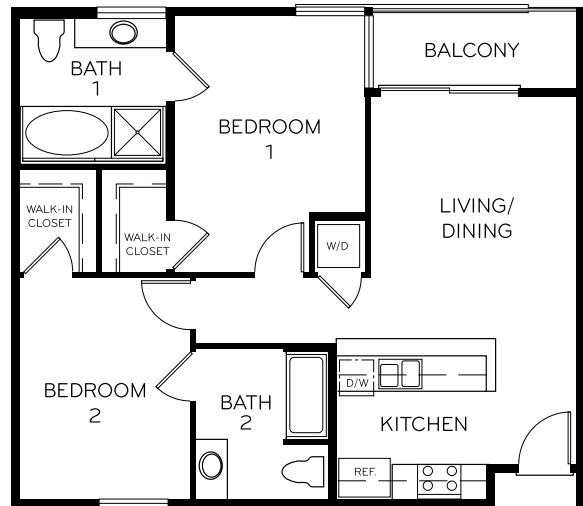


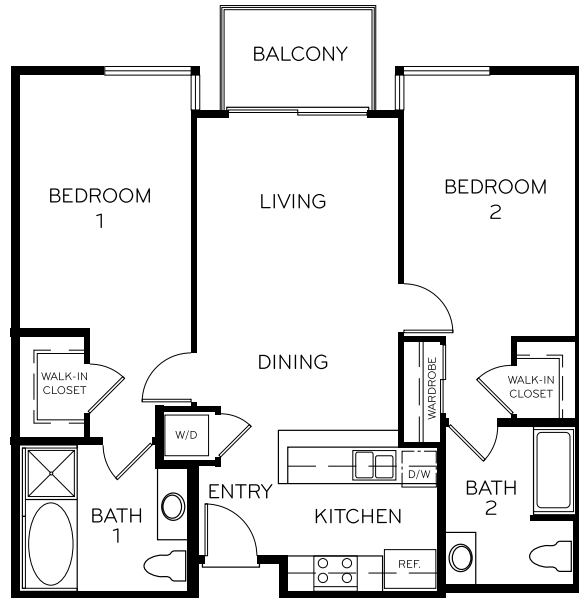
**PLAN F**

2 Bedroom/2 Bath  
Approx. 937 s.f.



**PLAN C**

2 Bedroom/2 Bath  
Approx. 1,004 s.f.

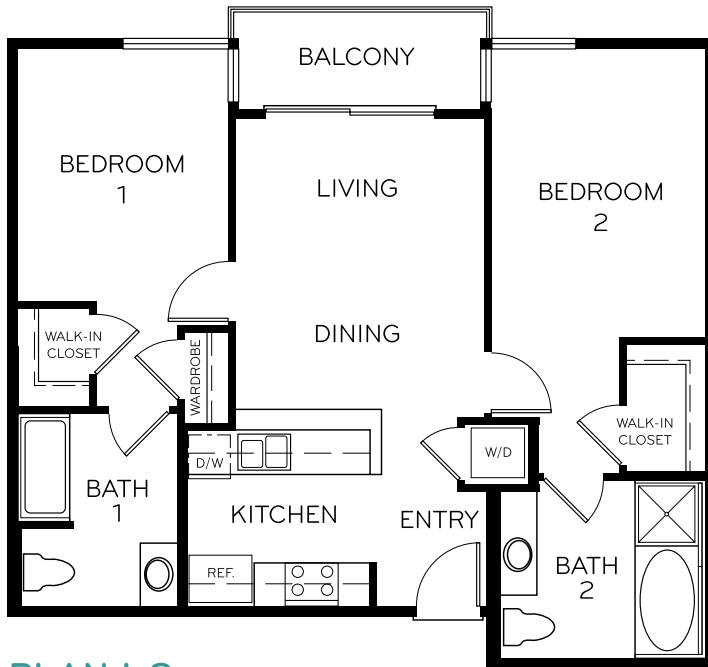


**PLAN G/H**

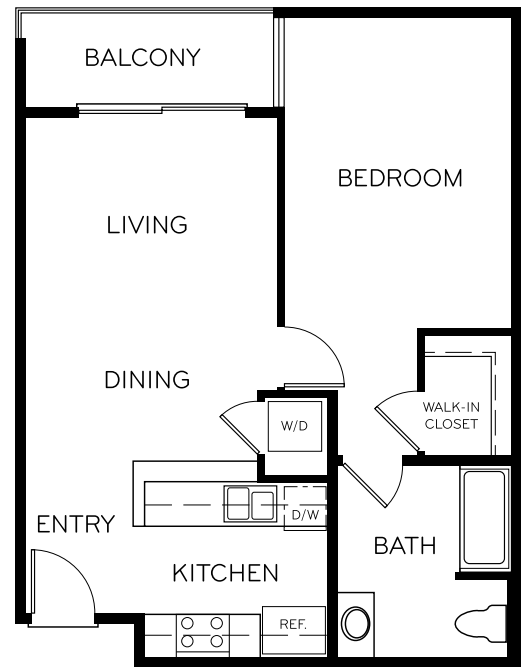
2 Bedroom/2 Bath  
Approx. 900 s.f.

In the interest of continuously improving the residence, the builder reserves the right to change floor plans, specifications and prices without notice. The floor plans, site plans and elevations are approximate and should not be relied on for exact dimensions. The owner and management company for Living at Santa Monica comply fully with the provisions of the Equal Housing Opportunity laws and nondiscrimination laws. The apartment homes have been designed and constructed to be accessible in accordance with these laws.

**Living at Santa Monica Leasing Center**  
519 6th Street, Suite 100, Santa Monica, Ca 90401  
**310-393-3500** [LivingAtSantaMonica.com](http://LivingAtSantaMonica.com)



**PLAN I-2**  
2 Bedroom/2 Bath  
Approx. 855 s.f.



**PLAN J**  
1 Bedroom/1 Bath  
Approx. 700 s.f.

In the interest of continuously improving the residence, the builder reserves the right to change floor plans, specifications and prices without notice. The floor plans, site plans and elevations are approximate and should not be relied on for exact dimensions. The owner and management company for Living at Santa Monica comply fully with the provisions of the Equal Housing Opportunity laws and nondiscrimination laws. The apartment homes have been designed and constructed to be accessible in accordance with these laws.

**Living at Santa Monica Leasing Center**  
519 6th Street, Suite 100, Santa Monica, Ca 90401  
310-393-3500 [LivingAtSantaMonica.com](http://LivingAtSantaMonica.com)