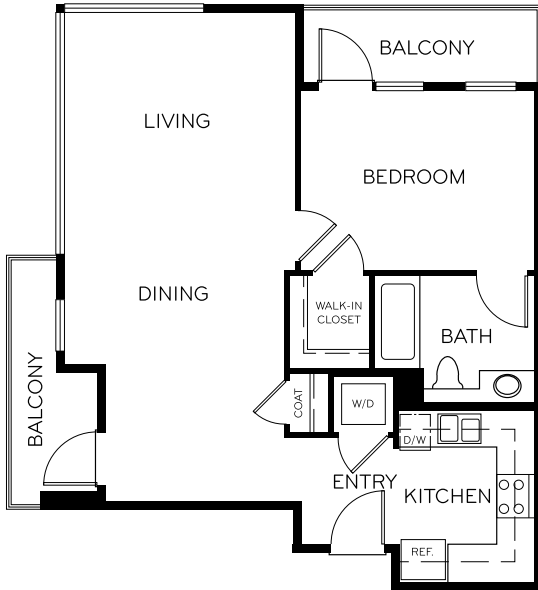
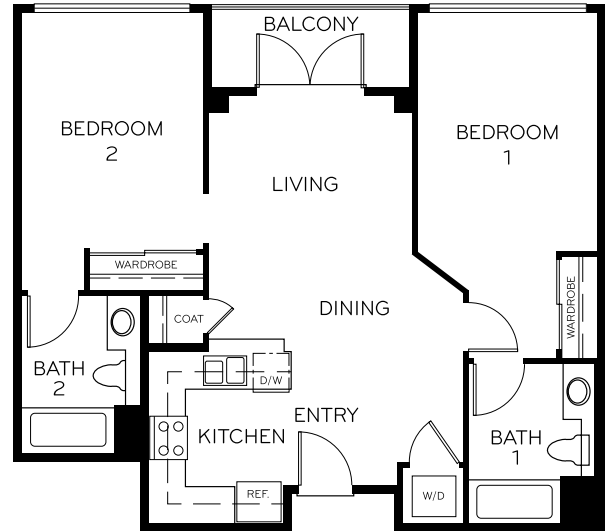


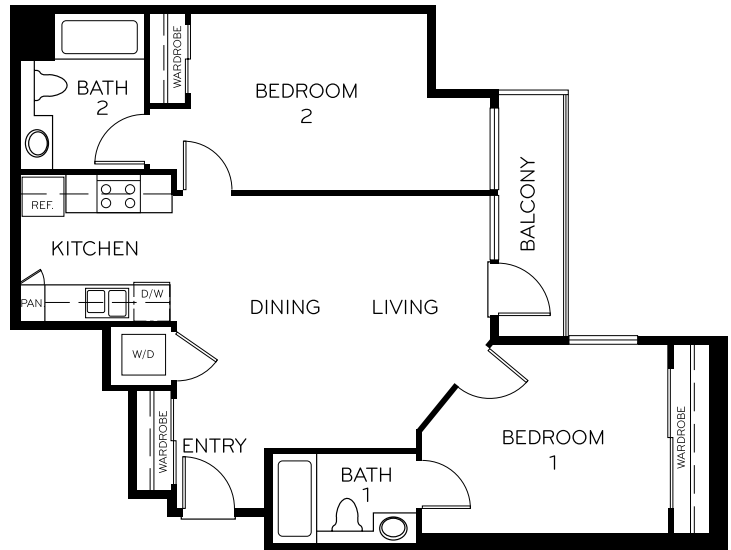
PLAN D-1

2 Bedroom/2 Bath
Approx. 857 s.f.



PLAN A

1 Bedroom/1 Bath
Approx. 726 s.f.

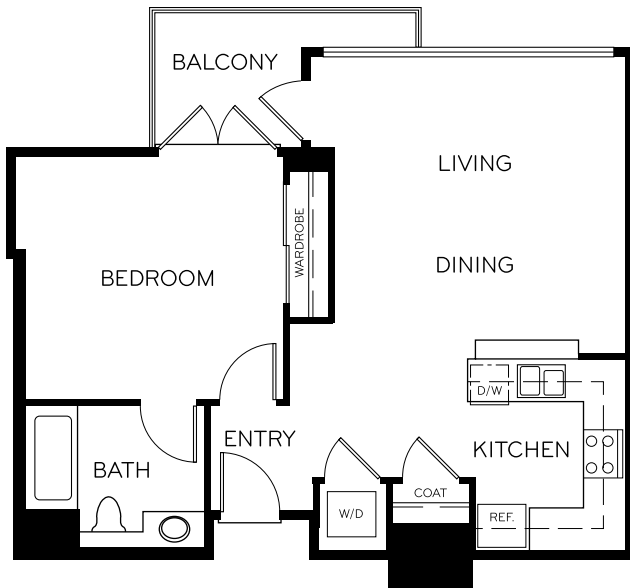


PLAN H

2 Bedroom/2 Bath
Approx. 858 s.f.

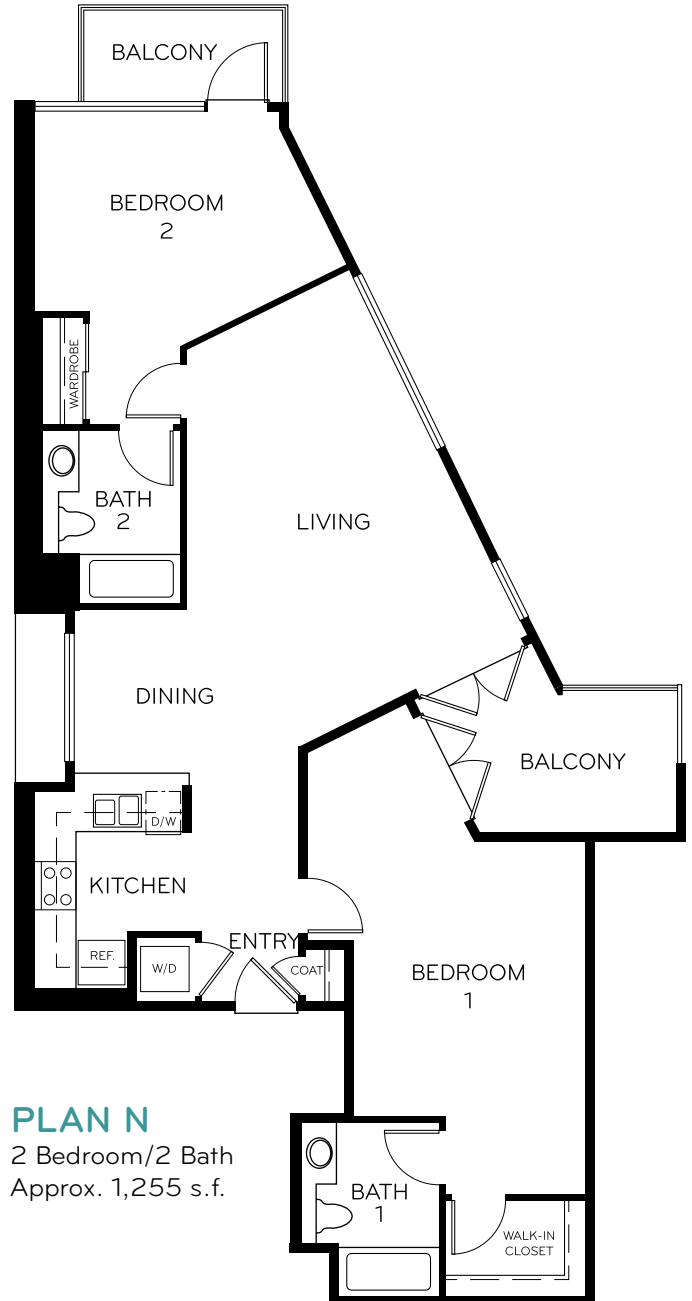
In the interest of continuously improving the residence, the builder reserves the right to change floor plans, specifications and prices without notice. The floor plans, site plans and elevations are approximate and should not be relied on for exact dimensions. The owner and management company for Living at Santa Monica comply fully with the provisions of the Equal Housing Opportunity laws and nondiscrimination laws. The apartment homes have been designed and constructed to be accessible in accordance with these laws.

Living at Santa Monica Leasing Center
519 6th Street, Suite 100, Santa Monica, Ca 90401
310-393-3500 LivingAtSantaMonica.com



PLAN J

1 Bedroom/1 Bath
Approx. 701 s.f.



PLAN N

2 Bedroom/2 Bath
Approx. 1,255 s.f.

In the interest of continuously improving the residence, the builder reserves the right to change floor plans, specifications and prices without notice. The floor plans, site plans and elevations are approximate and should not be relied on for exact dimensions. The owner and management company for Living at Santa Monica comply fully with the provisions of the Equal Housing Opportunity laws and nondiscrimination laws. The apartment homes have been designed and constructed to be accessible in accordance with these laws.

Living at Santa Monica Leasing Center
519 6th Street, Suite 100, Santa Monica, Ca 90401
310-393-3500 LivingAtSantaMonica.com